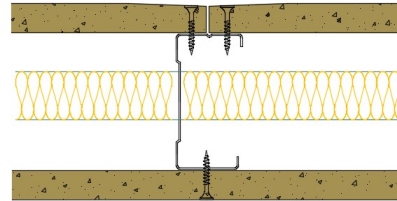


PSHD70-B-63(25) - SPEEDLINE System Data Sheet - Version V1 (24-10-23)

SPEEDLINE 70mm Heavy Duty 'C' Stud Partition
@600mm Ctrs, with BG Gyproc 15mm DuraLine
each side, 25mm APR



System Performance Breakdown

Fire Resistance:

BS476 Part 22:1987:

Test Ref & Date or Applied Ref & Report:

Max Height:

Thickness:

Duty Grade: BS 5234: Part 2:1992:

Sound Insulation:

60/60 Minutes (Integrity/Insulation).

BTC 17435F - BRE Report P102396-1011A

Refer to Speedline Specification Clause

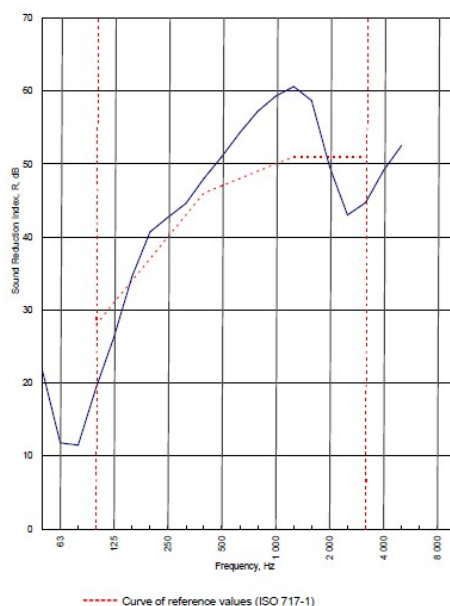
102 mm. (At Base Track, Excluding Finishes)

Severe - Annexes A-F

47 R_w dB, Date Tested or Assessed Against - 30/06/2010

Test Code:
H16909EA
Test Date:
30/06/2010

Freq. Hz	R dB
50	21.8
63	11.8
80	11.5
100	19.4
125	26.3
160	34.6
200	40.7
250	42.7
315	44.6
400	48.0
500	51.0
630	54.3
800	57.2
1 000	59.3
1 250	60.6
1 600	58.7
2 000	49.6
2 500	43.0
3 150	44.7
4 000	49.1
5 000	52.5
6 300	
8 000	
10 000	



Rating according to BS EN ISO 717-1:1997	R_w (C;Ctr) = 47 (-3;-9) dB
Evaluation based on laboratory measurement results obtained by an engineering method:	Max dev. 8.6 dB at 100 Hz
	$C_{50-3150} = -7$ dB $C_{50-5000} = -6$ dB $C_{100-5000} = -2$ dB
	$C_{11,50-3150} = -17$ dB $C_{11,50-5000} = -17$ dB $C_{11,100-5000} = -9$ dB

TESTED AT ONE OF THE UKAS
ACCREDITED LABORATORIES
BELOW

B.T.C
(H-Ref on Graph)

B.R.E

AIRO

S.R.L



Customer: Metsec plc Hespac Division

BTC 16960A: Page 9 of 11

SPEEDLINE Drywall Systems, Adsetts House, 16 Europa View, Sheffield Business Park, Sheffield, S9 1XH.

Tel: 0114 231 8030.

Email: enquiries@speedlinedrywall.co.uk

(As per the requirements set out in ISO/IEC 17025:2017 regarding test data the results stated have been carried out by voestalpine Metsec plc as part of the contract to supply Speedline Metal Sections to SIG Plc)